

Case Study : Integrated IM Strategy (Risk, CGA, FFP)

Issue

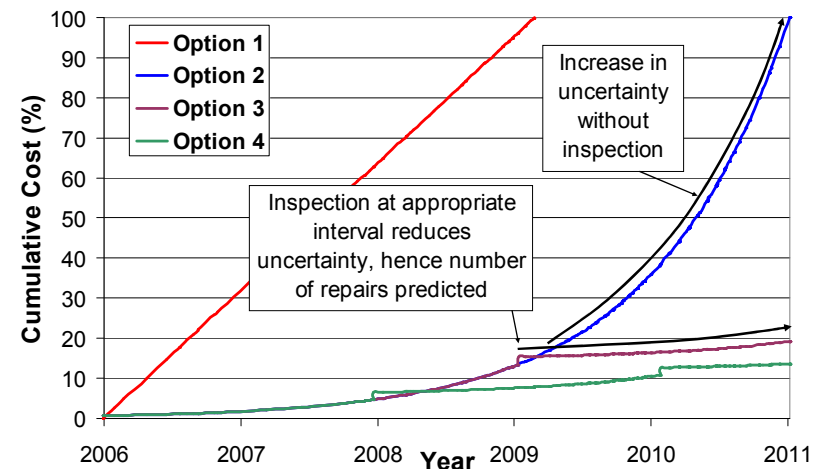
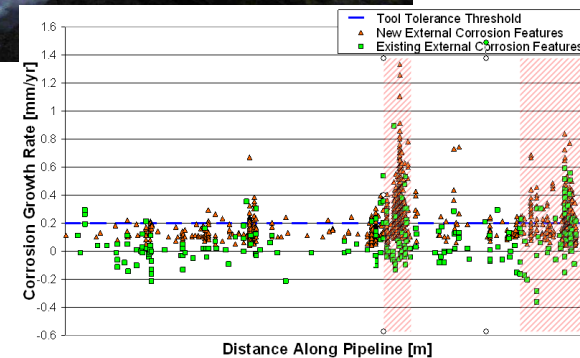
- 12 Inch, High temperature, oil pipeline
- PE coating suffering from stress cracking
- CP shielding leading to severe external corrosion

Approach

- Fitness for Service & Corrosion Growth Assessment
- Corrosion Diagnosis – Corrosion Under Insulation
- Future Integrity Plan

Outcome

- Corrosion growth study identified areas of most active corrosion
- Multiple inspections confirmed increasing corrosion rate
- Development of repair schedule focused on areas of active corrosion
- Rehabilitation plan optimised



Implementation of an integrity management strategy to optimise future inspection, maintenance and rehabilitation activities, Clausard, A Wilde, J Healy, A C Russell, MACAW Engineering, B Brown, ROSEN North America. Published at 7th International Pipeline Conference, Calgary, Alberta, Canada, September 29-October 3, 2008